

**EXPLANATORY PLAN OF STATUTORY RIGHTS OF WAY
OVER LOTS 8, 9 and 10 D.L. 32 O.D.Y.D.
PLAN EPP64961**

PLAN EPP65008

PURSUANT TO SECTION 99(1)(e) OF THE LAND TITLE ACT.

BCGS 82E.094

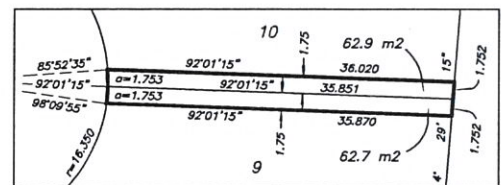
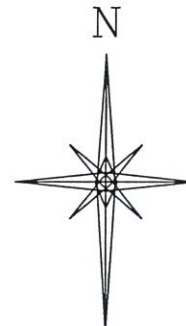
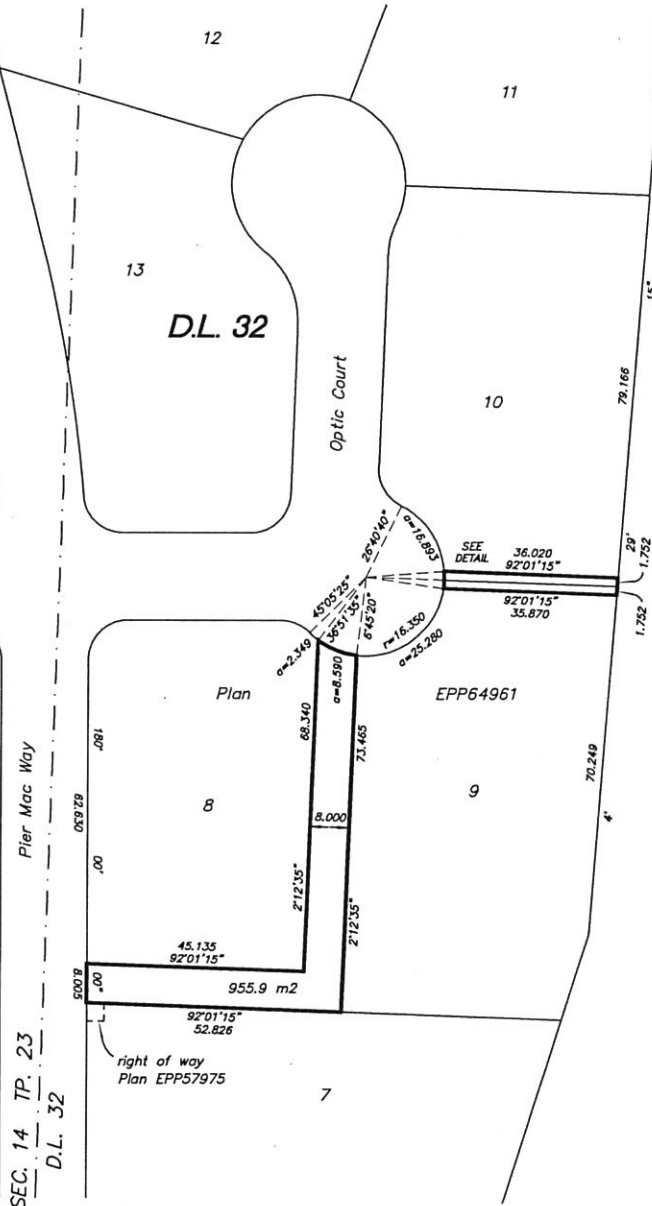


The intended size of this plan is 432 mm in width by 560 mm in height (C size) when plotted at a scale of 1:750.

**Sec. 14
Tp. 23**

7
Plan EPP56391

1
Plan EPP55881



DETAIL not to scale

This plan lies within the Central Okanagan Regional District.

This plan is based on the following Land Title and Survey Authority of BC records:
Plan EPP64961
Douglas A. Goddard, BCLS 588
Date: September 13, 2016.

file 16653 EPP65008 SRW

LEGEND

This plan shows horizontal ground-level distances. All distances are in metres.

Grid bearings are derived from Plan EPP56391. Integrated survey area No. 4 - Kelowna.

Lot	Plan	area of right of way
8	Plan EPP64961	955.9 m2
9	Plan EPP64961	62.7 m2
10	Plan EPP64961	62.9 m2

D.A. Goddard Land Surveying Inc.
103-1358 ST. PAUL STREET KELOWNA PHONE 250-763-3733

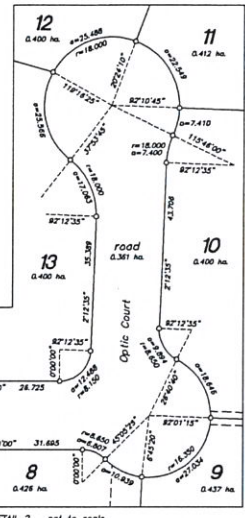
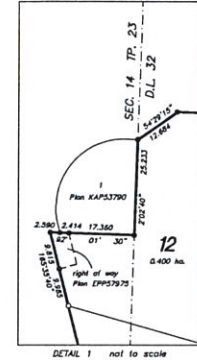
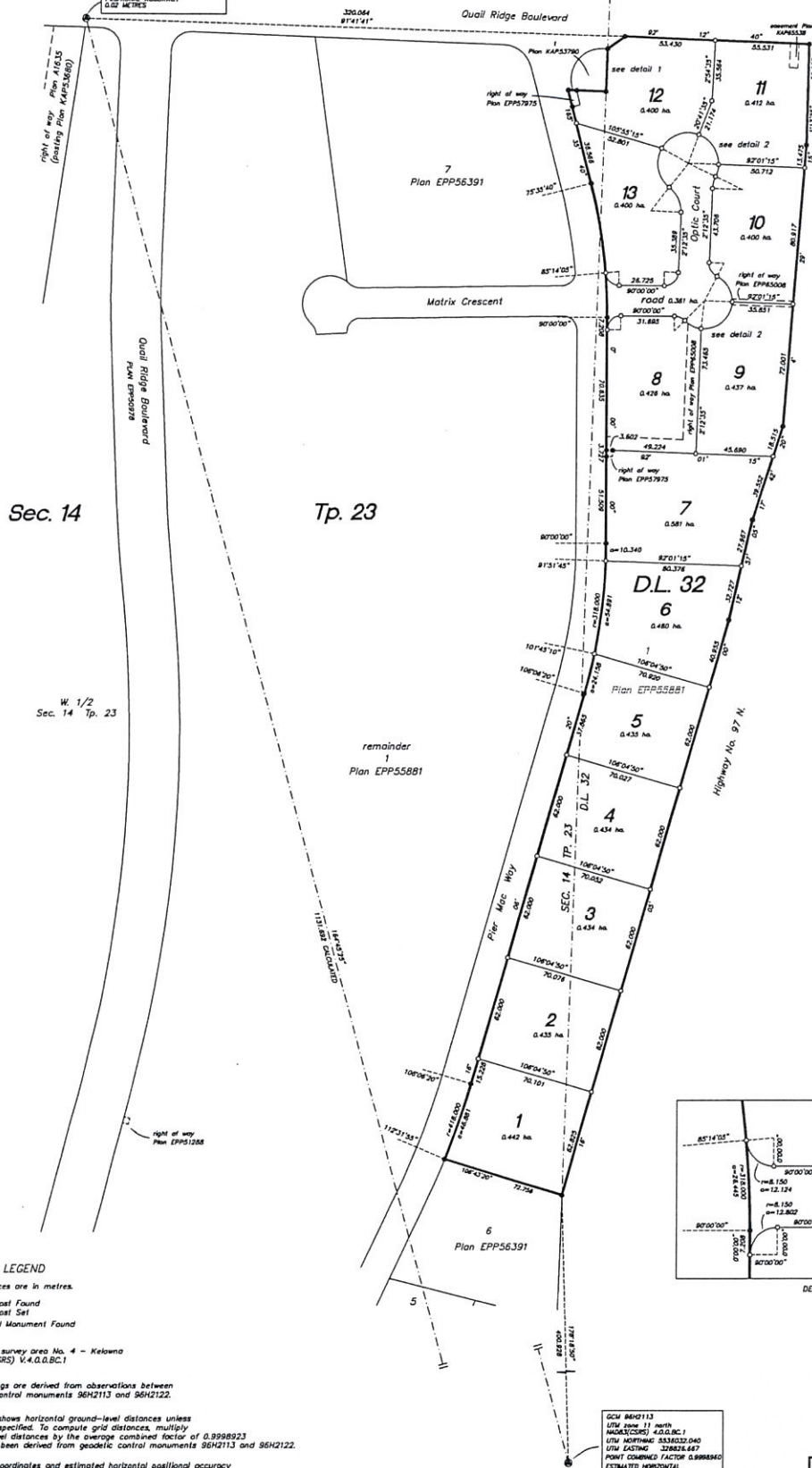
**SUBDIVISION PLAN OF PART OF LOT 1 D.L. 32
SEC. 14 TP. 23 O.D.Y.D. PLAN EPP55881
EXCEPT PLAN EPP56391.**

PLAN EPP64961

BCCS 82E.094

The intended size of this plan is 560 mm in width by 864 mm in height (D size) when plotted at a scale of 1:1250.

GCW 8642122
UTM zone 11 north
NAD83(CRS) 4.G.G.B.C.1
UTM NORTHING 533723.861
UTM EASTING 326529.143
POINT COMBINED FACTOR 0.9988857
ESTIMATED HORIZONTAL
POSITIONAL ACCURACY
0.02 METRES



LEGEND

- All distances are in metres.
- Iron Post Found
- Iron Post Set
- ⊙ Control Monument Found

Integrated survey area No. 4 - Kelowna
NAD83 (CRS) V-4.G.G.B.C.1

Grid bearings are derived from observations between
geodetic control monuments 96H2113 and 96H2122.

This plan shows horizontal ground-level distances unless
otherwise specified. To compute grid distances, multiply
ground-level distances by the average combined factor of 0.9988923
which has been derived from geodetic control monuments 96H2113 and 96H2122.

The UTM coordinates and estimated horizontal positional accuracy
achieved are derived from the Mascof published coordinates and
standard deviations for geodetic control monuments 96H2113 and 96H2122.

GCW 8642113
UTM zone 11 north
NAD83(CRS) 4.G.G.B.C.1
UTM NORTHING 533632.040
UTM EASTING 326624.647
POINT COMBINED FACTOR 0.9988840
ESTIMATED HORIZONTAL
POSITIONAL ACCURACY
0.02 METRES

This plan lies within the Central Okanagan
Regional District.
This plan lies within the jurisdiction of the
approving officer for the City of Kelowna.

The field survey represented by this plan was
completed on the 13th day of September, 2016.
Douglas A. Goddard, BCLS 568.

IR 16653 & 376 16653 EPP64961

D.A. Goddard Land Surveying Inc.
103-1358 ST. PAUL STREET KELOWNA PHONE 250-783-3733