



Mould Engineering

LEGEND

DOMESTIC SERVICE	
IRRIGATION SERVICE	
AIR VALVE	
BLOW OFF	
TEST STATION	
HYDRANT	
VALVE	
METERING CHAMBER	
PRV	
REDUCER	
END CAP	
WATERMAIN	
PRIVATE W/M	
EASEMENT	

Drawn L.G.

Date MARCH 1998

Scale 1:2500

Revisions

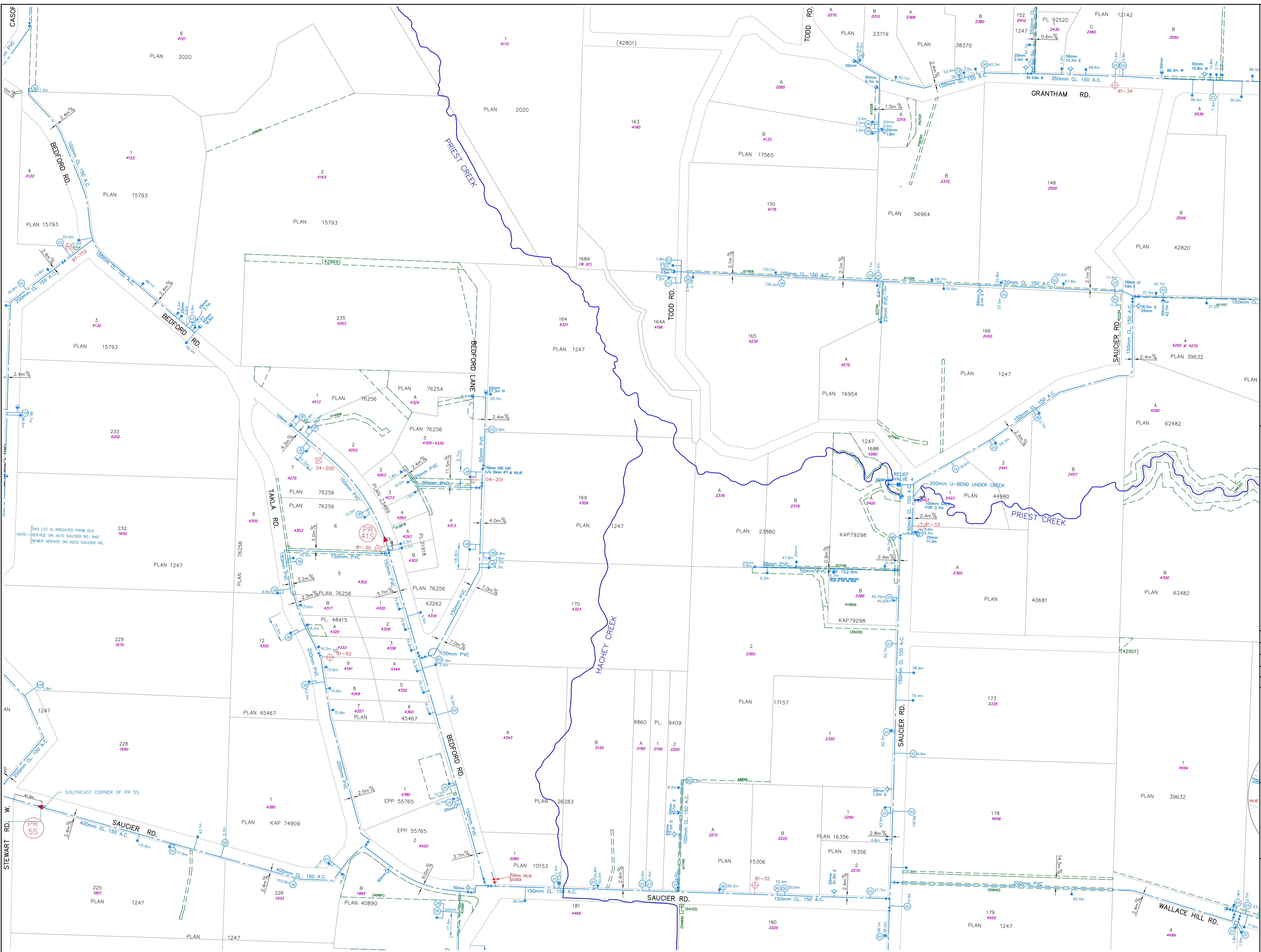
Date	Description	By
Mar/00	Composite Base & Water System	J.A.
Aug/02	Composite Base & Water System	R.P.
Aug/04	Composite Base & Water System	R.P.
June/07	Composite Base & Water System	M.K.
May/08	Composite Base & Water System	S.W.
Dec/10	Composite Base & Water System	S.W.
Dec/14	Composite Base & Water System	S.W.
Sept/17	Composite Base & Water System	S.W.

Index

SE-20	SE-17	SE-12
SE-21	SE-18	SE-13
SE-22	SE-19	SE-14

Map No.

SE-18



NOTE: THIS LOT IS IRRIGATED FROM OLD SERVICE ON 1670 SAUCIER RD. AND NEWER SERVICE ON 4202 SAUCIER RD.