

Mould Engineering

LEGEND

- DOMESTIC SERVICE
- IRRIGATION SERVICE
- AIR VALVE
- BLOW OFF
- TEST STATION
- HYDRANT
- VALVE
- METERING CHAMBER
- PRV
- REDUCER
- END CAP
- WATERMAIN
- PRIVATE W/M
- EASEMENT

Drawn L.G.

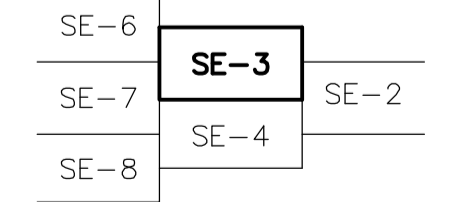
Date MARCH 1998

Scale 1:2500

Revisions

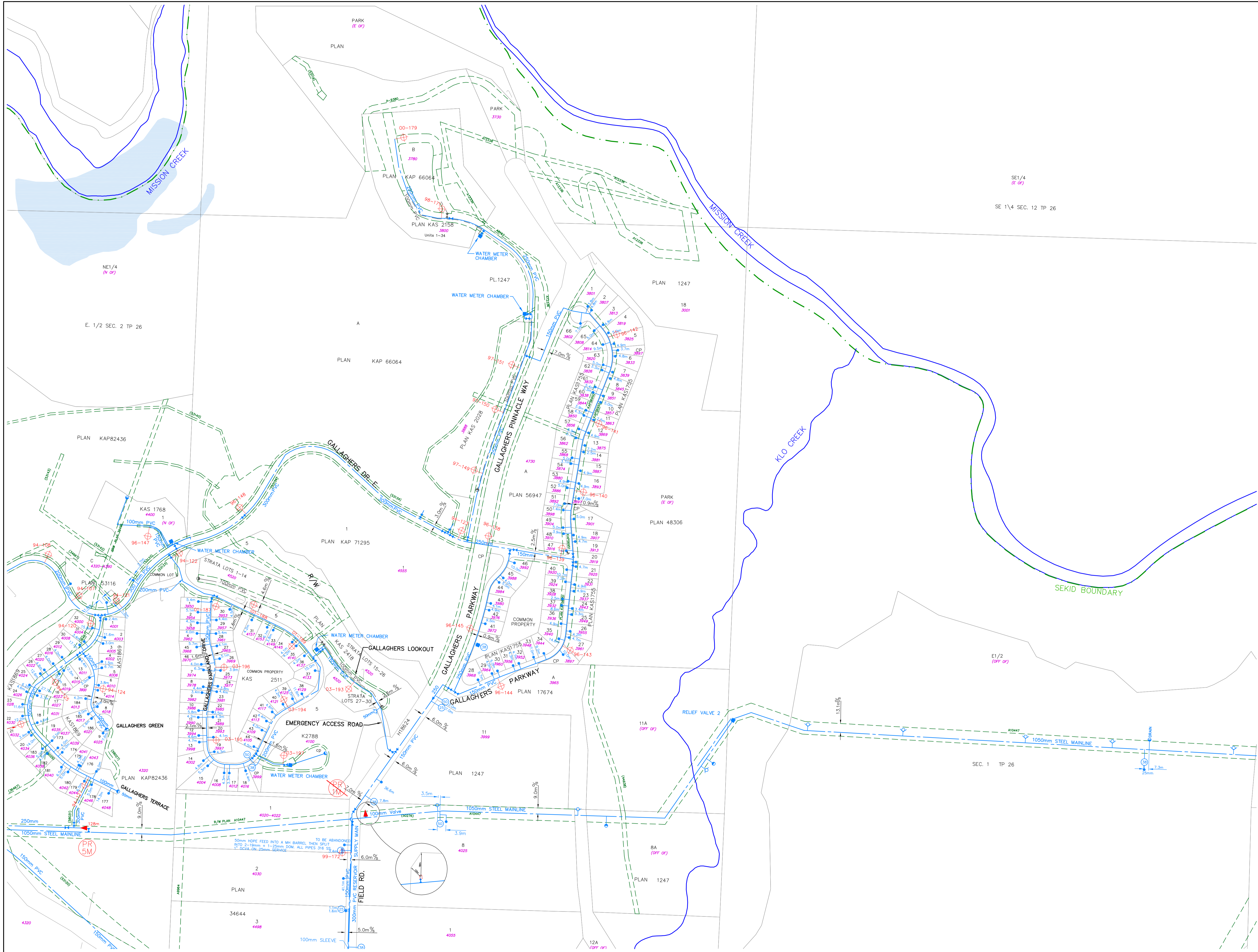
Date	Description	By
Mar/00	Composite Base & Water System	J.A.
Aug/02	Composite Base & Water System	R.P.
Aug/04	Composite Base & Water System	R.P.
June/07	Composite Base & Water System	M.K.
May/08	Composite Base & Water System	S.W.
Dec/10	Composite Base & Water System	S.W.
Dec/14	Composite Base & Water System	S.W.
Sept./17	Composite Base & Water System	S.W.

Index



Map No.

SE-3



TO BE ABANDONED INTO 2x1.8m. x 1.25m DOME. ALL PIPES 316 SS 1" DIA. ON 25mm SERVICE

